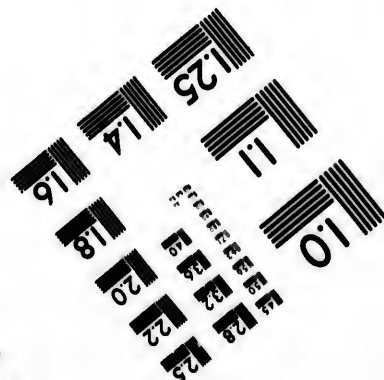
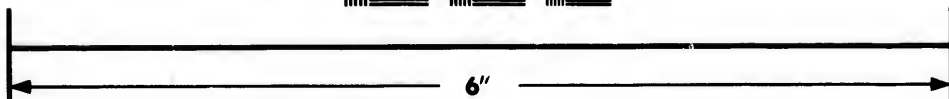
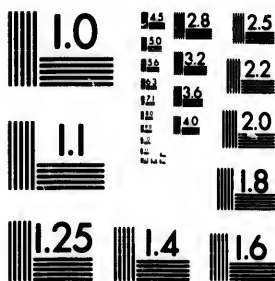


**IMAGE EVALUATION
TEST TARGET (MT-3)**



**Photographic
Sciences
Corporation**

23 WEST MAIN STREET
WEBSTER, N.Y. 14580
(716) 872-4503

**CIHM/ICMH
Microfiche
Series.**

**CIHM/ICMH
Collection de
microfiches.**



Canadian Institute for Historical Microreproductions / Institut canadien de microreproductions historiques

© 1984

Technical and Bibliographic Notes/Notes techniques et bibliographiques

The Institute has attempted to obtain the best original copy available for filming. Features of this copy which may be bibliographically unique, which may alter any of the images in the reproduction, or which may significantly change the usual method of filming, are checked below.

L'Institut a microfilmé le meilleur exemplaire qu'il lui a été possible de se procurer. Les détails de cet exemplaire qui sont peut-être uniques du point de vue bibliographique, qui peuvent modifier une image reproduite, ou qui peuvent exiger une modification dans la méthode normale de filmage sont indiqués ci-dessous.

- Coloured covers/
Couverture de couleur
- Covers damaged/
Couverture endommagée
- Covers restored and/or laminated/
Couverture restaurée et/ou pelliculée
- Cover title missing/
Le titre de couverture manque
- Coloured maps/
Cartes géographiques en couleur
- Coloured ink (i.e. other than blue or black)/
Encre de couleur (i.e. autre que bleue ou noire)
- Coloured plates and/or illustrations/
Planches et/ou illustrations en couleur
- Bound with other material/
Relié avec d'autres documents
- Tight binding may cause shadows or distortion
along interior margin/
La reliure serrée peut causer de l'ombre ou de la
distortion le long de la marge intérieure
- Blank leaves added during restoration may
appear within the text. Whenever possible, these
have been omitted from filming/
Il se peut que certaines pages blanches ajoutées
lors d'une restauration apparaissent dans le texte,
mais, lorsque cela était possible, ces pages n'ont
pas été filmées.
- Additional comments:/
Commentaires supplémentaires:

- Coloured pages/
Pages de couleur
- Pages damaged/
Pages endommagées
- Pages restored and/or laminated/
Pages restaurées et/ou pelliculées
- Pages discoloured, stained or foxed/
Pages décolorées, tachetées ou piquées
- Pages detached/
Pages détachées
- Showthrough/
Transparence
- Quality of print varies/
Qualité inégale de l'impression
- Includes supplementary material/
Comprend du matériel supplémentaire
- Only edition available/
Seule édition disponible
- Pages wholly or partially obscured by errata
slips, tissues, etc., have been refilmed to
ensure the best possible image/
Les pages totalement ou partiellement
obscurcies par un feuillet d'errata, une pelure,
etc., ont été filmées à nouveau de façon à
obtenir la meilleure image possible.

This item is filmed at the reduction ratio checked below/
Ce document est filmé au taux de réduction indiqué ci-dessous.

10X	14X	18X	22X	26X	30X
<input type="checkbox"/>	<input type="checkbox"/>	<input type="checkbox"/>	<input checked="" type="checkbox"/>	<input type="checkbox"/>	<input type="checkbox"/>
12X	16X	20X	24X	28X	32X

The co
to the

The im
possib
of the
filming

Origin
beginn
the las
sion, c
other
first p
sion, s
or illu

The la
shall c
TINUE
which

Maps,
differ
entire
beginn
right
requir
metho

The copy filmed here has been reproduced thanks to the generosity of:

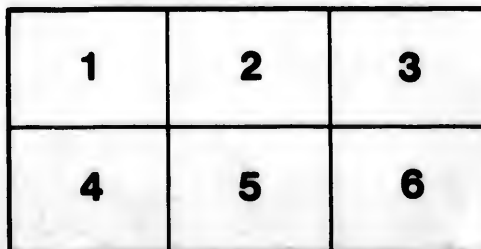
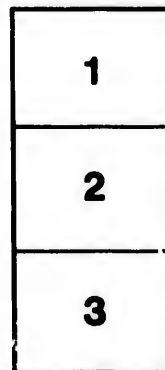
University of Toronto
ARCHIVES

The images appearing here are the best quality possible considering the condition and legibility of the original copy and in keeping with the filming contract specifications.

Original copies in printed paper covers are filmed beginning with the front cover and ending on the last page with a printed or illustrated impression, or the back cover when appropriate. All other original copies are filmed beginning on the first page with a printed or illustrated impression, and ending on the last page with a printed or illustrated impression.

The last recorded frame on each microfiche shall contain the symbol \rightarrow (meaning "CONTINUED"), or the symbol ∇ (meaning "END"), whichever applies.

Maps, plates, charts, etc., may be filmed at different reduction ratios. Those too large to be entirely included in one exposure are filmed beginning in the upper left hand corner, left to right and top to bottom, as many frames as required. The following diagrams illustrate the method:



L'exemplaire filmé fut reproduit grâce à la générosité de:

University of Toronto
ARCHIVES

Les images suivantes ont été reproduites avec le plus grand soin, compte tenu de la condition et de la netteté de l'exemplaire filmé, et en conformité avec les conditions du contrat de filmage.

Les exemplaires originaux dont la couverture en papier est imprimée sont filmés en commençant par le premier plat et en terminant soit par la dernière page qui comporte une empreinte d'impression ou d'illustration, soit par le second plat, selon le cas. Tous les autres exemplaires originaux sont filmés en commençant par la première page qui comporte une empreinte d'impression ou d'illustration et en terminant par la dernière page qui comporte une telle empreinte.

Un des symboles suivants apparaîtra sur la dernière image de chaque microfiche, selon le cas: le symbole \rightarrow signifie "A SUIVRE", le symbole ∇ signifie "FIN".

Les cartes, planches, tableaux, etc., peuvent être filmés à des taux de réduction différents. Lorsque le document est trop grand pour être reproduit en un seul cliché, il est filmé à partir de l'angle supérieur gauche, de gauche à droite, et de haut en bas, en prenant le nombre d'images nécessaire. Les diagrammes suivants illustrent la méthode.

the
Mat

suc

mc

con

ser
to
Cr

a
P

University of Toronto.

SCHOOL OF CIVIL ENGINEERING.

1871.

The requisites for obtaining the Diploma in Civil Engineering are as follows :

Having produced satisfactory certificates of good conduct.

Having Matriculated in the Faculty of Law ; or having passed the Examination for the First Year in the Faculty of Arts ; or having passed the Examination appointed for Matriculation in the School of Civil Engineering.

Being of the standing of two years from Matriculation.

Having passed, in each of those years, an examination in the subjects prescribed for such year in the course appointed for Students of Civil Engineering.

EXAMINATIONS.

The Annual Examinations for Matriculation will be held in the latter part of the month of September.

The Examinations for the First and Second Years will be held in the month of May.

Notice will be given annually in January of the day when the Examinations will commence.

Every Student who proposes to present himself at any Examination is required to send to the Registrar, at least three weeks before the day appointed, a paper (according to a printed form which will be provided), stating his standing, and whether he is a Candidate for Honors or otherwise.

FEES.

For Matriculation or Entrance	Four Dollars.
For the Diploma.....	Six Dollars.

PRIZES.

A Prize of the value of sixteen dollars in Books will be given to the Student who, at the Examination of the First or of the Second Year, has been placed first in the First Class of Honors.

SUBJECTS OF EXAMINATION.**MATRICULATION.****MATHEMATICS.**

Arithmetic.

Algebra. (Colenso's).

EUCLID, Bb. I., II., III., IV., VI., and definitions of B. V. (Colenso's Ed. of Simpson's).

Nature and use of Logarithms. (Cherriman's).

Plane Trigonometry, as far as the solution of plane triangles. (Cherriman's).

ENGLISH.

Grammar and Composition.

FRENCH.

Grammar and Exercises. (DeFiva's).

VOLTAIRE, Histoire de Charles XII., Bb. I., II., III.

CORNEILLE, Horace, Act IV.

HISTORY AND GEOGRAPHY.

Outlines of British History to the present time.

Outlines of Modern Geography.

Geography of the British Empire, including her Colonies.

DRAWING.

Drawing from a copy.

FIRST YEAR.**MATHEMATICS.**

EUCLID, XI, P. 1 to 21.

Statics and Dynamics. (Cherriman's).

Astronomy. (Main's in Weale's series).

ENGLISH.

Composition.

Orthographical, Etymological, and Rhetorical forms of the English Language. (Fowler's English Language, Parts III., IV., VII.)

FRENCH.

Grammar.

Translation from English into French.

WIRZ, Construction de chemins de fer, Chap. I.-X., inclusive. (Roret's series).

CHEMISTRY.

Chemistry and Chemical Physics. (Fownes's Elements of Chemistry; Lardner's Handbook of Heat and Electricity, or Miller's Chemical Physics).

MINERALOGY AND GEOLOGY.

The properties and distinctive characters of the commonly occurring minerals and metallic ores.

The structural characters, conditions of occurrence, and classification of rocks generally.

Geological phenomena now in action, with theory of springs, currents, tides, winds, &c. (Dana's Manual of Mineralogy; Lyell's Elementary Geology; Buff's Physics of the Earth; Synopsis of Professor Chapman's Lectures)

DRAWING.

Drawing from a model.

Perspective. (Pyne's, Weale's Rudimentary Treatises).

SURVEYING AND GEODESY.

Construction, and use of field and office instruments.

Surveying operations.

Mensuration of areas and solids.

Levelling operations; cross sections.

Method of conducting a trigonometrical survey, and of finding the latitude and longitude, and variation of the compass.

(Simms's Mathematical Instruments, and Treatise on Levelling; Gillespie's Land Surveying; Williams's Practical Geodesy; Practical Mathematics, Chambers's Educational Course).

SECOND YEAR.

MATHEMATICS.

Hydrostatics (Chambers's Educational Course).

Optics. (Chambers's Educational Course).

Acoustics. (Chambers's Educational Course).

Descriptive Geometry. (Heather's).

CHEMISTRY.

Applied Chemistry. (Knapp's Technology).

MINERALOGY AND GEOLOGY.

Physical and Chemical character of minerals, including the applications of Crystallography, and the construction of Chemical Formulse.

Classification and description of minerals.

General principles of Geology fully considered.

Geology of North America, with rock formations, and economic minerals of Canada considered in detail.

(Dana's System of Mineralogy, 4th Ed.; De la Beche's Geological Observer; Geology of Canada by Logan and Hunt.)

CIVIL ENGINEERING AND ARCHITECTURE.

Architecture, building, and building materials, and measurement of work.

Bridge construction.

Strength of materials and stability of structure.

Calculation of earth-work in cutting and embankments.

Setting out railway curves and other railway operations.

Road making.

Drainage operations.

Construction of canals, gauging of water-courses, and application of water-power.

Construction of stationary and locomotive steam-engines.

(Weale's Rudimentary Treatise; Haupt's Bridge Construction; Mahan's Civil Engineer; Lardner's Steam-engine and Railway Economy; Practical Mathematics, Chambers's Educational Course.)

DRAWING.

Perspective and projections.

Engineering and Architectural Drawing.

